

County Health Rankings & Roadmaps

Building a Culture of Health, County by County

A Robert Wood Johnson Foundation program

May 12, 2020

“Place Matters”

County Health Rankings & Roadmaps



countyhealthrankings.org



Support
provided by

Robert Wood Johnson
Foundation



YOUR FACILITATORS & GUEST



Attica Scott

*Action Learning Coach
Louisville KY*



Joe Hinton

*Action Learning Coach
Chicago IL*



Kadie Peters

*Vice President
Community Impact
Strategy and Resource
Development
United Way of Central
Alabama*



Sergio Carmona

*Executive Director
Blair County
Community Action
Program*



Addy Matney

*Board Treasurer
Greenville Transit
Authority*



WHY WE DO WHAT WE DO

Improve Health Outcomes



WHY WE DO WHAT WE DO

Increase Health Equity

JOIN US FOR MORE DISCUSSION – TODAY!

- ▶ **When:** Immediately following the webinar
- ▶ **What:** Interactive learning experience, opportunity to share ideas and ask questions
- ▶ **How:** Videoconference and/or phone via Zoom
- ▶ **Why:** Deepen the webinar learning, allow further exploration



Webinar Discussion Group

AN ORGANIZATIONAL CHANGE MODEL FOR ADVANCING HEALTH EQUITY



health action PARTNERSHIP

- **Founded in 2007**
- **Long term effort to improve health outcomes & community health**
- **Leveraged more than \$16 million that directly supports member organizations**

Our Mission: The Health Action Partnership works with diverse stakeholders to make Central Alabama a healthier place for all residents to live, learn, work, play and achieve their highest possible quality of life.

COMMITTED “BACKBONE” ORGANIZATIONS



United Way
of Central Alabama, Inc.



COMMUNITY FOUNDATION
OF GREATER BIRMINGHAM



WALKER AREA Community Foundation
25 YEARS of SUSTAINABLE GIVING



PLACE MATTERS FOR HEALTH



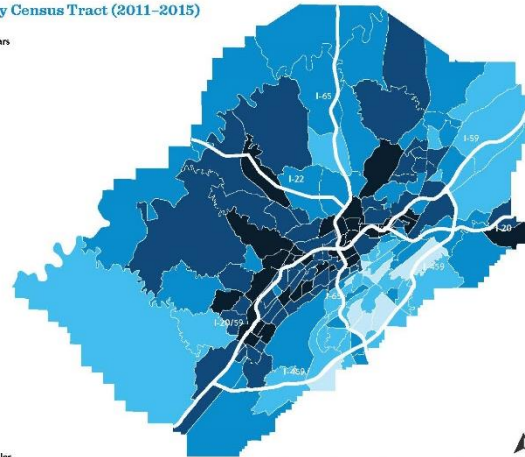
Community Health Equity Report

2018

Life Expectancy by Census Tract (2011-2015)

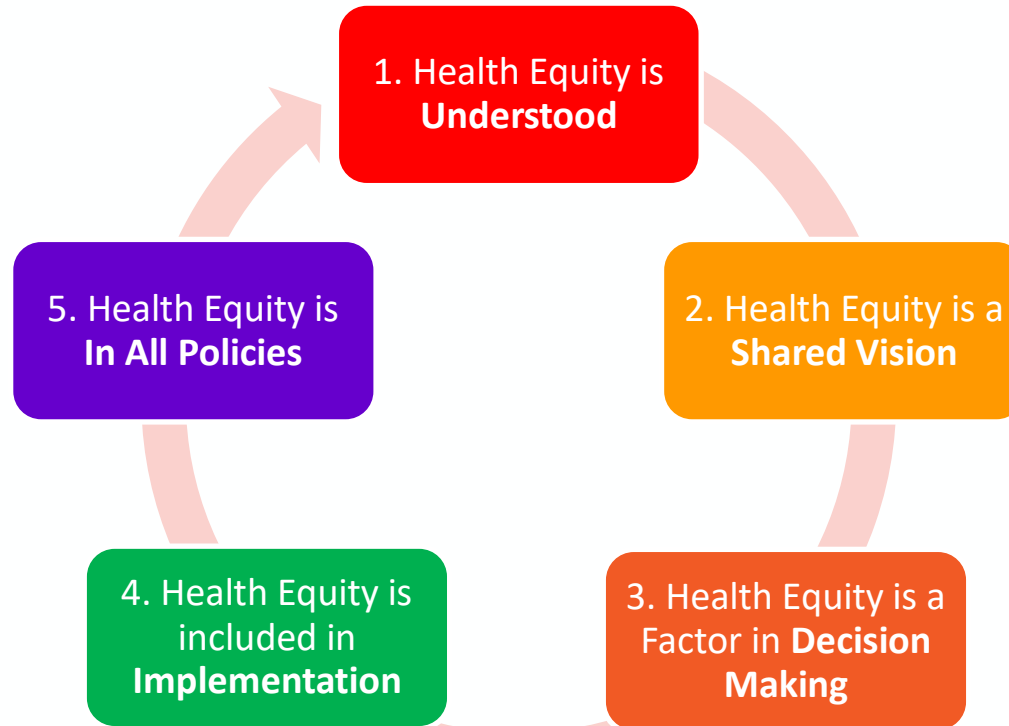


Life expectancy at birth is the average number of years an individual is expected to live.

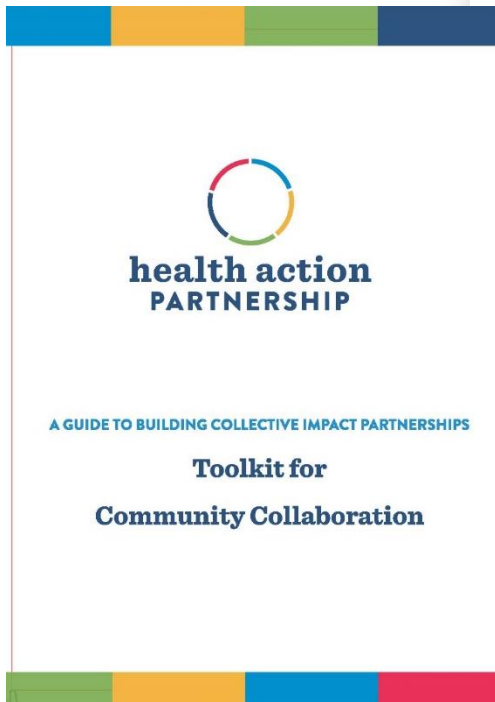


Your zip code may be more important than your genetic code in predicting your health outcomes and life expectancy.

HEALTH EQUITY: VISION TO REALITY

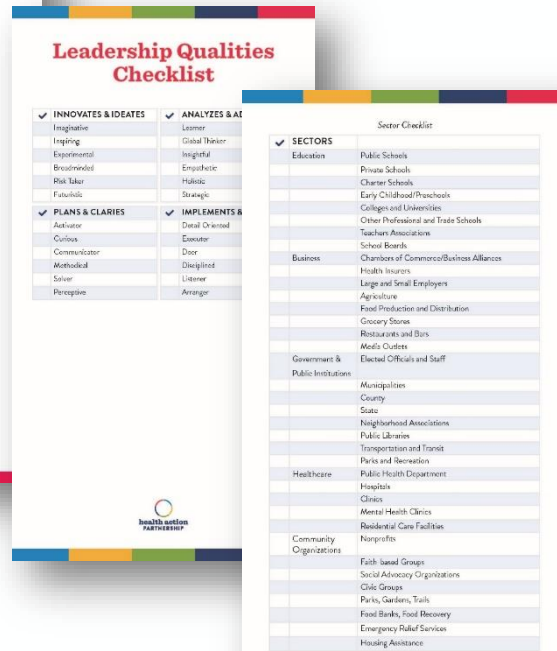


WHAT'S NEXT: EXPANDING THE HEALTH ACTION PARTNERSHIP FOOTPRINT



Principles for Advancing Health Equity

Supported by the Health Action Partnership
Jefferson County, Alabama



Opening Doors: Federal Strategic Plan to Prevent and End Homelessness

No one should experience homelessness and no one should be without a safe, stable place to call home.



1. Finish the job of ending chronic homelessness by 2015.

2. Prevent and end homelessness among Veterans by 2015.

3. Prevent and end homelessness for families, youth and children by 2020.

4. Set a path to ending all types of homelessness.

The Plan set forth four bold and ambitious goals.

HUD's Policy Priorities: Scoring Criteria



- **Housing First approach**
- **Rapid Re-housing**

Housing First: Definition

- Housing First is an approach to **quickly and successfully connect** individuals and families experiencing homelessness **to permanent housing without preconditions and barriers to entry**, such as sobriety, treatment or service participation requirements.
- Supportive services are **offered** to maximize housing stability and prevent returns to homelessness as opposed to addressing predetermined treatment goals prior to permanent housing entry.



Housing First: Key Principles

- Safe and affordable housing
- All people can achieve housing stability in permanent housing
- Everyone is “housing ready”
- Improved quality of life, health, mental health, and employment can be achieved through housing
- Right to determination, dignity and respect
- Configuration of housing and services based on participants needs and preferences

Housing First: Core Components

- Few to no programmatic prerequisites to permanent housing entry
- Low barrier admission policies
- Rapid and streamlined entry into housing
- Supportive services are voluntary
- Tenants have full rights, responsibilities, and legal protections
- Practices and policies to prevent lease violations and evictions
- Applicable in a variety of housing models



Increase Greenlink
funding in
2019-2020
Greenville County
2-year budget from
\$1M to \$4.5M.

TRANSIT ADVOCACY GOAL

ADVOCACY TARGETS

- Defined our target as the swayable middle
- Developed messaging that spoke to what each target member valued
- Identified circles of influence for each of our targets





Greenville Connects

April 12, 2019

Hear from Greenville County business leader Bo Aughey on why investments in Greenlink are so important: "In order for Greenville County to be successful long-term, we have to solve our transportation challenges. Greenlink Connects us to our employees, and our employees are the key to success."



"Public transit is about more than just buses. It's about economic connection. We foster growth by investing in ourselves, in our community."

Hank Hyatt



Greenville
Connects



**Contact Your
Councilman With
One Click!**

Title * ▼

Full Name *

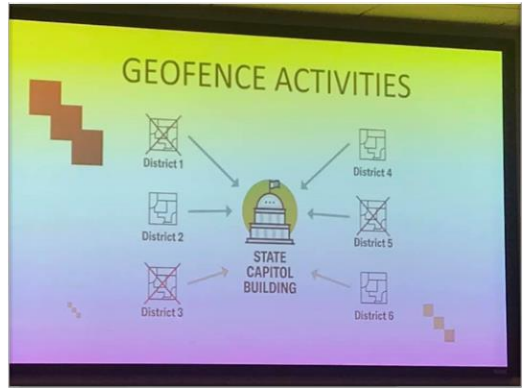
Address *

Zip * city and state not required

Phone *

Email *

SEND EMAIL



Greenville Connects

May 5, 2019 · 🌐

Check out this great new OpEd from Dr. Alex Garvey, senior vice president of mission at Bon Secours St. Francis Health System!



GREENVILLEONLINE.COM

Opinion: Why Greenville must have a plan to provide public transit

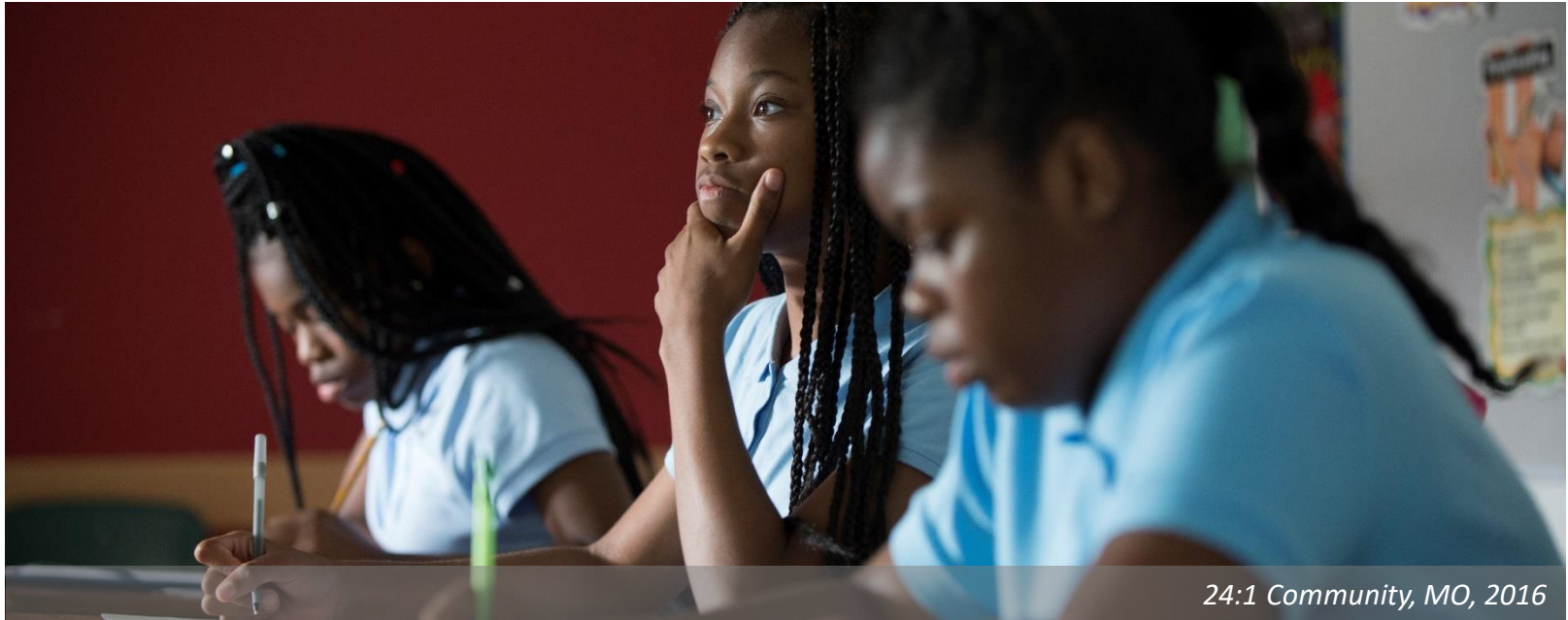


Greenville
Connects



Kansas City, MO

QUESTIONS?



24:1 Community, MO, 2016

WE WANT TO HEAR FROM YOU!

Click the link to answer a few questions about today's webinar.

JOIN US FOR MORE DISCUSSION – TODAY!

- ▶ **When:** Immediately following the webinar
- ▶ **What:** Interactive learning experience, opportunity to share ideas and ask questions
- ▶ **How:** Videoconference and/or phone via Zoom
- ▶ **Why:** Deepen the webinar learning, allow further exploration



Webinar Discussion Group

JOIN US FOR A SPECIAL TOPICS WEBINAR SERIES

Health Equity and Social Solidarity in the Time of Pandemic: Strategies for COVID-19 Response and Recovery

Webinars will highlight challenges communities are facing as they respond to COVID-19 and offer insights from local and national leaders as we work toward a more inclusive and equitable recovery for all.

Exploring Guaranteed Income as a Strategy to Address COVID-19: Disproportionate Impact on Tribal Nations Income Inequality

Tuesday, May 21 | 3:00 – 4:30pm ET

Tuesday, July 9 | 3:00 – 4:30pm ET

COVID-19: Disproportionate Impact on Black Communities

Tuesday, June 25 | 3:00 – 4:30pm ET

US COVID-19 Mapping: Bridging Data with Historical Context

Thursday, July 21 | 3:00 – 5:00pm ET

Responding to Crisis in the LatinX Population with an Equity Lens

Tuesday, August 13 | 3:00 – 4:30pm ET

Learn more: www.countyhealthrankings.org/webinars

STAY CONNECTED



- [Facebook.com/CountyHealthRankings](https://www.facebook.com/CountyHealthRankings)



- Follow [@CHRankings](https://twitter.com/CHRankings)



- Sign up for our newsletter
[CountyHealthRankings.org/subscribe](https://www.CountyHealthRankings.org/subscribe)

JOIN US FOR A DISCUSSION GROUP NOW!

REGISTRATION LINK IN CHAT