

**County Health
Rankings & Roadmaps**

Building a Culture of Health, County by County

A Robert Wood Johnson Foundation program

2014 *Rankings* Arkansas



A collaboration between the Robert Wood Johnson Foundation and the University of Wisconsin Population Health Institute.



Support provided by

Robert Wood Johnson
Foundation



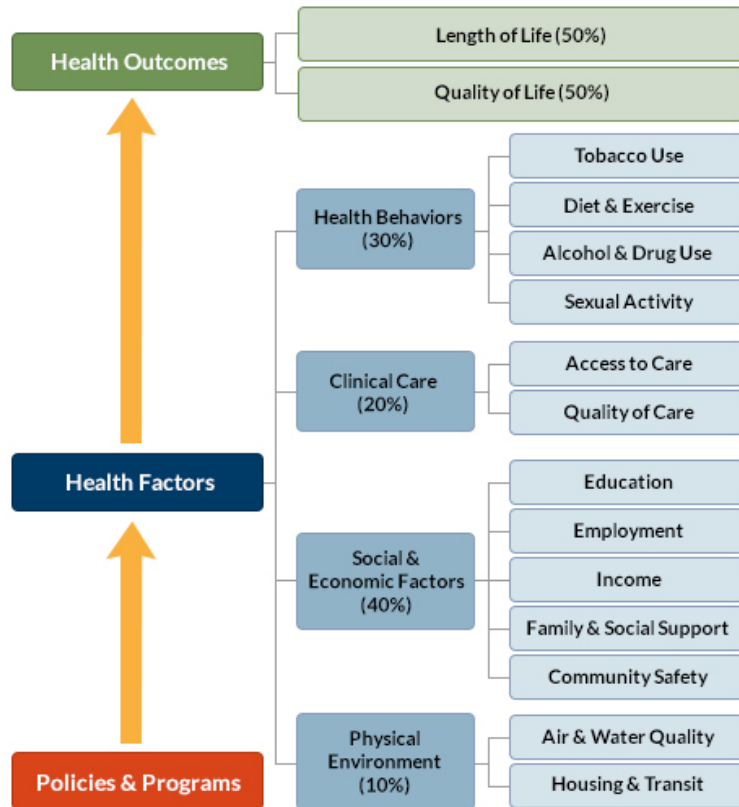
INSIDE FRONT COVER – INTENTIONALLY BLANK

INTRODUCTION

The *County Health Rankings & Roadmaps* program helps communities identify and implement solutions that make it easier for people to be healthy in their schools, workplaces, and neighborhoods. Ranking the health of nearly every county in the nation, the *County Health Rankings* illustrate *what we know* when it comes to what is making people sick or healthy. The *Roadmaps* show *what we can do* to create healthier places to live, learn, work, and play. The Robert Wood Johnson Foundation (RWJF) collaborates with the University of Wisconsin Population Health Institute (UWPHI) to bring this program to cities, counties, and states across the nation.

WHAT ARE THE COUNTY HEALTH RANKINGS?

The *County Health Rankings* measure the health of nearly every county in the nation. Published online at countyhealthrankings.org, the *Rankings* help counties understand what influences how healthy residents are and how long they will live. The *Rankings* look at a variety of measures that affect health, such as high school graduation rates, access to healthy foods, rates of smoking, obesity, and teen births. Based on data available for each county, the *Rankings* are unique in their ability to measure the overall health of each county in all 50 states. They have been used to garner support for local health improvement initiatives among government agencies, healthcare providers, community organizations, business leaders, policy makers, and the public.



HOW ARE PEOPLE USING THE RANKINGS?

- Ø Highlighting community success
- Ø Identifying root causes of poor health
- Ø Supporting policy change
- Ø Engaging communities in health improvement

For more information, visit countyhealthrankings.org

WHAT ARE THE ROADMAPS TO HEALTH?

The *Roadmaps to Health* help communities bring people together to look at the many factors that influence health, select strategies that work, and make changes that will have a lasting impact. The *Roadmaps* focus on helping communities determine what they can do and what they can learn from others.

What You Can Do

The *Roadmaps to Health* Action Center provides step-by-step guides, tools, and webinars to help groups working to improve the health of their communities. Community Coaches also provide customized consultation to local communities that have demonstrated a willingness to address factors that we know influence health, such as education, income, and community safety.

The Action Center also features *What Works for Health* – a searchable database of evidence-informed policies and programs that can improve health.

Learning From Others

Honoring the efforts of communities working at the forefront of health improvement, the Robert Wood

Johnson Foundation annually awards the *RWJF Culture of Health Prize* to outstanding communities that are working toward better health. The *Prize* recognizes communities with strong and diverse partnerships that are coming together with a shared vision and commitment to address multiple factors that affect health and make lasting changes that create a culture of health for all. Visit countyhealthrankings.org or rwjf.org/prize to learn about the work of past prize winners.

At countyhealthrankings.org, we also feature stories from communities across the nation who have used data from the *County Health Rankings* or have engaged in strategies to improve health. For example, you can learn from the successes and challenges of the 30 *Roadmaps to Health* Community Grantees. These grantees are working to create positive policy or systems changes that address social and economic factors that influence how healthy people are and how long they live, such as education and community safety. You might also want to contact your local affiliate of United Way Worldwide, the National Business Coalition on Health, or the National Association of Counties - their national parent organizations have partnered with us to raise awareness and stimulate action to improve health in their local members' communities.

How can you get involved?

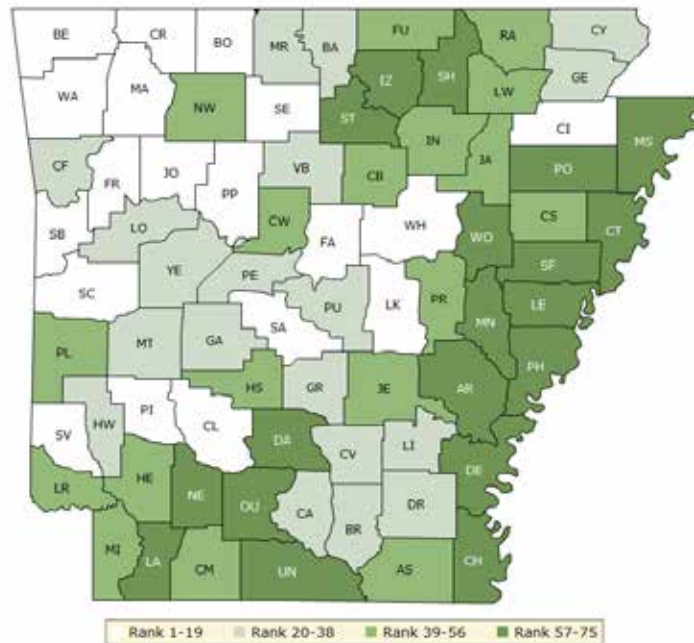
In communities large and small, people from all walks of life are taking ownership and action to improve health. Visit countyhealthrankings.org to get ideas and guidance on how you can take action in your community. Working with others, you can improve the health of your community.



The green map below shows the distribution of Arkansas's **health outcomes**, based on an equal weighting of length and quality of life.

Lighter colors indicate better performance in the respective summary rankings. Detailed information on the underlying measures is available on our web site.

HEALTH OUTCOMES RANKS

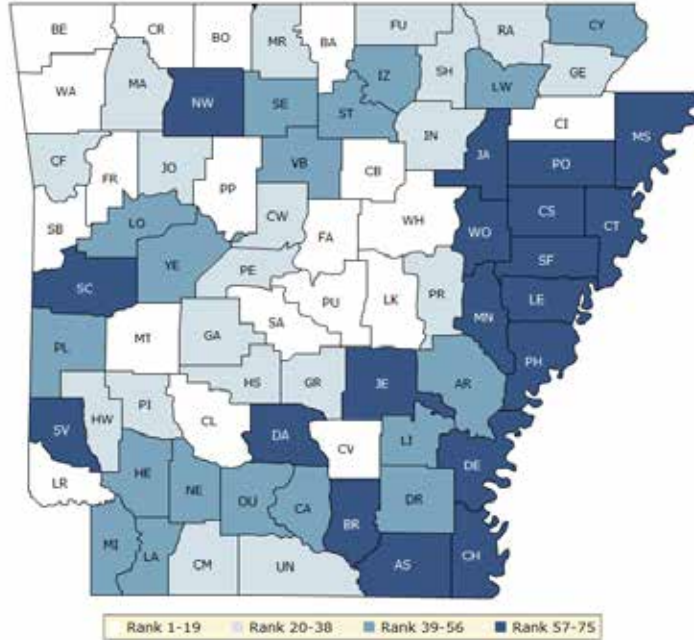


County	Rank	County	Rank	County	Rank	County	Rank
Arkansas	60	Dallas	65	Lee	67	Pope	10
Ashley	45	Desha	70	Lincoln	28	Prairie	47
Baxter	20	Drew	35	Little River	46	Pulaski	21
Benton	1	Faulkner	3	Logan	33	Randolph	40
Boone	7	Franklin	17	Lonoke	11	Saline	4
Bradley	29	Fulton	52	Madison	6	Scott	18
Calhoun	34	Garland	36	Marion	30	Searcy	12
Carroll	14	Grant	32	Miller	43	Sebastian	16
Chicot	68	Greene	22	Mississippi	73	Sevier	19
Clark	8	Hempstead	41	Monroe	61	Sharp	57
Clay	24	Hot Spring	50	Montgomery	26	St. Francis	58
Cleburne	42	Howard	31	Nevada	64	Stone	63
Cleveland	23	Independence	51	Newton	56	Union	59
Columbia	48	Izard	62	Ouachita	74	Van Buren	25
Conway	54	Jackson	49	Perry	37	Washington	2
Craighead	13	Jefferson	53	Phillips	75	White	9
Crawford	27	Johnson	15	Pike	5	Woodruff	66
Crittenden	69	Lafayette	72	Poinsett	71	Yell	38
Cross	55	Lawrence	39	Polk	44		

The blue map displays Arkansas’s summary ranks for **health factors**, based on weighted scores for health behaviors, clinical care, social and economic factors, and the physical environment.

Lighter colors indicate better performance in the respective summary rankings. Detailed information on the underlying measures is available on our web site.

HEALTH FACTORS RANKS



County	Rank	County	Rank	County	Rank	County	Rank
Arkansas	41	Dallas	59	Lee	70	Pope	12
Ashley	67	Desha	66	Lincoln	52	Prairie	36
Baxter	8	Drew	46	Little River	17	Pulaski	14
Benton	1	Faulkner	2	Logan	39	Randolph	22
Boone	7	Franklin	18	Lonoke	5	Saline	3
Bradley	61	Fulton	33	Madison	37	Scott	58
Calhoun	50	Garland	23	Marion	24	Searcy	45
Carroll	16	Grant	26	Miller	43	Sebastian	13
Chicot	74	Greene	27	Mississippi	72	Sevier	57
Clark	11	Hempstead	49	Monroe	69	Sharp	38
Clay	53	Hot Spring	31	Montgomery	19	St. Francis	73
Cleburne	15	Howard	28	Nevada	48	Stone	56
Cleveland	10	Independence	25	Newton	60	Union	34
Columbia	32	Izard	40	Ouachita	47	Van Buren	51
Conway	30	Jackson	68	Perry	35	Washington	4
Craighead	6	Jefferson	63	Phillips	75	White	9
Crawford	21	Johnson	20	Pike	29	Woodruff	65
Crittenden	71	Lafayette	55	Poinsett	62	Yell	54
Cross	64	Lawrence	42	Polk	44		

Summary Health Outcomes & Health Factors Rankings

Counties receive two ranks:

- Health Outcomes
- Health Factors

Each of these ranks represents a weighted summary of a number of measures.

Health outcomes represent how healthy a county is while health factors represent what influences the health of the county.

Rank	Health Outcomes	Rank	Health Factors
1	Benton	1	Benton
2	Washington	2	Faulkner
3	Faulkner	3	Saline
4	Saline	4	Washington
5	Pike	5	Lonoke
6	Madison	6	Craighead
7	Boone	7	Boone
8	Clark	8	Baxter
9	White	9	White
10	Pope	10	Cleveland
11	Lonoke	11	Clark
12	Searcy	12	Pope
13	Craighead	13	Sebastian
14	Carroll	14	Pulaski
15	Johnson	15	Cleburne
16	Sebastian	16	Carroll
17	Franklin	17	Little River
18	Scott	18	Franklin
19	Sevier	19	Montgomery
20	Baxter	20	Johnson
21	Pulaski	21	Crawford
22	Greene	22	Randolph
23	Cleveland	23	Garland
24	Clay	24	Marion
25	Van Buren	25	Independence
26	Montgomery	26	Grant
27	Crawford	27	Greene
28	Lincoln	28	Howard
29	Bradley	29	Pike
30	Marion	30	Conway
31	Howard	31	Hot Spring
32	Grant	32	Columbia
33	Logan	33	Fulton
34	Calhoun	34	Union
35	Drew	35	Perry
36	Garland	36	Prairie
37	Perry	37	Madison
38	Yell	38	Sharp
39	Lawrence	39	Logan
40	Randolph	40	Izard

Rank	Health Outcomes	Rank	Health Factors
41	Hempstead	41	Arkansas
42	Cleburne	42	Lawrence
43	Miller	43	Miller
44	Polk	44	Polk
45	Ashley	45	Searcy
46	Little River	46	Drew
47	Prairie	47	Ouachita
48	Columbia	48	Nevada
49	Jackson	49	Hempstead
50	Hot Spring	50	Calhoun
51	Independence	51	Van Buren
52	Fulton	52	Lincoln
53	Jefferson	53	Clay
54	Conway	54	Yell
55	Cross	55	Lafayette
56	Newton	56	Stone
57	Sharp	57	Sevier
58	St. Francis	58	Scott
59	Union	59	Dallas
60	Arkansas	60	Newton
61	Monroe	61	Bradley
62	Izard	62	Poinsett
63	Stone	63	Jefferson
64	Nevada	64	Cross
65	Dallas	65	Woodruff
66	Woodruff	66	Desha
67	Lee	67	Ashley
68	Chicot	68	Jackson
69	Crittenden	69	Monroe
70	Desha	70	Lee
71	Poinsett	71	Crittenden
72	Lafayette	72	Mississippi
73	Mississippi	73	St. Francis
74	Ouachita	74	Chicot
75	Phillips	75	Phillips

2014 County Health Rankings: Measures, Data Sources, and Years of Data

	Measure	Data Source	Years of Data
HEALTH OUTCOMES			
Length of Life	Premature death	National Center for Health Statistics	2008-2010
Quality of Life	Poor or fair health	Behavioral Risk Factor Surveillance System	2006-2012
	Poor physical health days	Behavioral Risk Factor Surveillance System	2006-2012
	Poor mental health days	Behavioral Risk Factor Surveillance System	2006-2012
	Low birthweight	National Center for Health Statistics	2005-2011
HEALTH FACTORS			
HEALTH BEHAVIORS			
Tobacco Use	Adult smoking	Behavioral Risk Factor Surveillance System	2006-2012
Diet and Exercise	Adult obesity	National Center for Chronic Disease Prevention and Health Promotion	2010
	Food environment index	USDA Food Environment Atlas, Map the Meal Gap	2010-2011
	Physical inactivity	National Center for Chronic Disease Prevention and Health Promotion	2010
	Access to exercise opportunities	OneSource Global Business Browser, Delorme map data, ESRI, & US Census Tigerline Files	2010 & 2012
Alcohol and Drug Use	Excessive drinking	Behavioral Risk Factor Surveillance System	2006-2012
	Alcohol-impaired driving deaths	Fatality Analysis Reporting System	2008-2012
Sexual Activity	Sexually transmitted infections	National Center for HIV/AIDS, Viral Hepatitis, STD, and TB prevention	2011
	Teen births	National Center for Health Statistics	2005-2011
CLINICAL CARE			
Access to Care	Uninsured	Small Area Health Insurance Estimates	2011
	Primary care physicians	HRSA Area Resource File	2011
	Dentists	HRSA Area Resource File	2012
	Mental health providers	CMS, National Provider Identification	2013
Quality of Care	Preventable hospital stays	Medicare/Dartmouth Institute	2011
	Diabetic screening	Medicare/Dartmouth Institute	2011
	Mammography screening	Medicare/Dartmouth Institute	2011
SOCIAL AND ECONOMIC FACTORS			
Education	High school graduation	data.gov, supplemented with National Center for Education Statistics	2010-2011
	Some college	American Community Survey	2008-2012
Employment	Unemployment	Bureau of Labor Statistics	2012
Income	Children in poverty	Small Area Income and Poverty Estimates	2012
Family and Social Support	Inadequate social support	Behavioral Risk Factor Surveillance System	2005-2010
	Children in single-parent households	American Community Survey	2008-2012
Community Safety	Violent crime	Uniform Crime Reporting - FBI	2009-2011
	Injury deaths	CDC WONDER	2006-2010
PHYSICAL ENVIRONMENT			
Air and Water Quality	Air pollution - particulate matter ¹	CDC WONDER	2011
	Drinking water violations	Safe Drinking Water Information System	FY 2012-2013
Housing and Transit	Severe housing problems	HUD, Comprehensive Housing Affordability Strategy	2006-2010
	Driving alone to work	American Community Survey	2008-2012
	Long commute – driving alone	American Community Survey	2008-2012

¹ Not available for AK and HI.

CREDITS

Report Authors

University of Wisconsin-Madison
School of Medicine and Public Health
Department of Population Health Sciences
Population Health Institute

Bridget Catlin, PhD, MHSA
Amanda Jovaag, MS
Julie Willems Van Dijk, PhD, RN
Patrick Remington, MD, MPH

This publication would not have been possible without the following contributions:

Data

Centers for Disease Control and Prevention: National Center for Health Statistics and Division of Behavioral Surveillance
Dartmouth Institute for Health Policy & Clinical Practice

Research Assistance

Jennifer Buechner
Hyojun Park, MA
Elizabeth Pollock
Jennifer Robinson
Matthew Rodock, MPH
Anne Roubal, MS

Communications and Outreach

Burness Communications
Alison Bergum, MPA
Matthew Call
Kate Konkle, MPH
Kitty Jerome, MA
Karen Odegaard, MPH
Jan O'Neill, MPA

Design

Forum One, Alexandria, VA

Robert Wood Johnson Foundation

Abbey Cofsky, MPH – Senior Program Officer
Michelle Larkin, JD, MS, RN – Assistant Vice-President, Program Portfolios
Marjorie Paloma, MPH – Senior Policy Advisor
James S. Marks, MD, MPH – Senior Vice-President and Director, Program Portfolios
Joe Marx – Senior Communications Officer

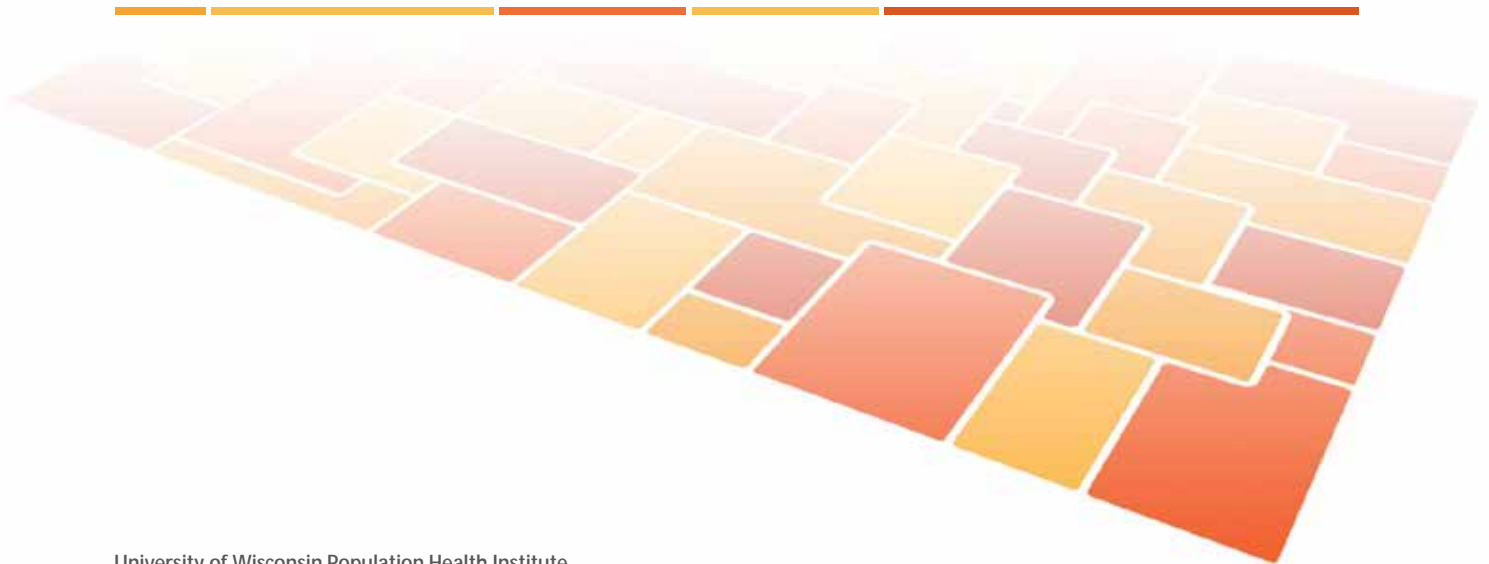
Suggested citation: University of Wisconsin Population Health Institute. *County Health Rankings 2014*.

INSIDE BACK COVER – INTENTIONALLY BLANK

County Health Rankings & Roadmaps

Building a Culture of Health, County by County

countyhealthrankings.org



University of Wisconsin Population Health Institute
610 Walnut St, #524, Madison, WI 53726
(608) 265-8240 / info@countyhealthrankings.org

