

**County Health  
Rankings & Roadmaps**

Building a Culture of Health, County by County

A Robert Wood Johnson Foundation program

# 2014 *Rankings* Nebraska



A collaboration between the Robert Wood Johnson Foundation and the University of Wisconsin Population Health Institute.



Support provided by

Robert Wood Johnson Foundation



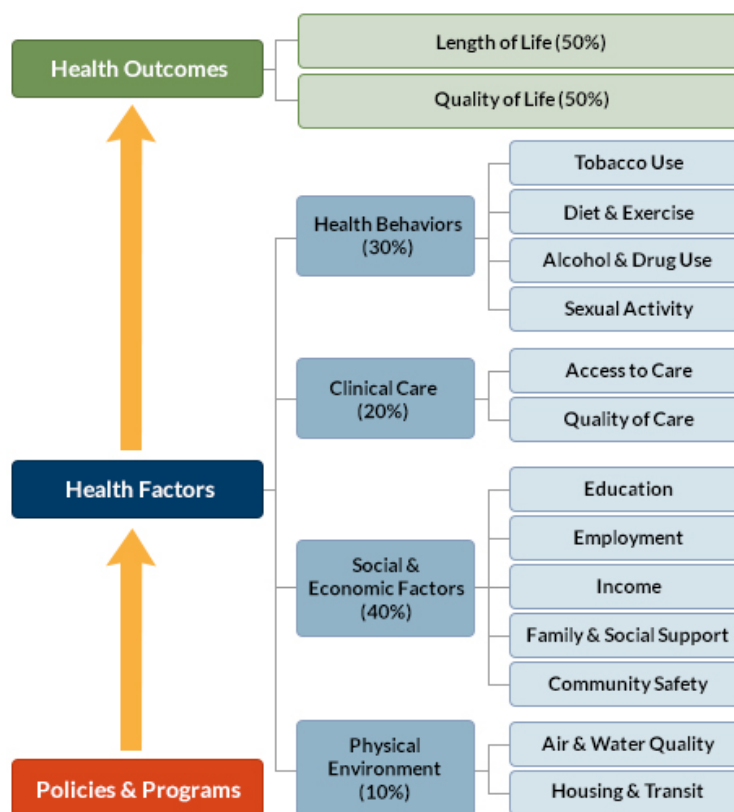
INSIDE FRONT COVER – INTENTIONALLY BLANK

## INTRODUCTION

The *County Health Rankings & Roadmaps* program helps communities identify and implement solutions that make it easier for people to be healthy in their schools, workplaces, and neighborhoods. Ranking the health of nearly every county in the nation, the *County Health Rankings* illustrate *what we know* when it comes to what is making people sick or healthy. The *Roadmaps* show *what we can do* to create healthier places to live, learn, work, and play. The Robert Wood Johnson Foundation (RWJF) collaborates with the University of Wisconsin Population Health Institute (UWPHI) to bring this program to cities, counties, and states across the nation.

## WHAT ARE THE COUNTY HEALTH RANKINGS?

The *County Health Rankings* measure the health of nearly every county in the nation. Published online at [countyhealthrankings.org](http://countyhealthrankings.org), the *Rankings* help counties understand what influences how healthy residents are and how long they will live. The *Rankings* look at a variety of measures that affect health, such as high school graduation rates, access to healthy foods, rates of smoking, obesity, and teen births. Based on data available for each county, the *Rankings* are unique in their ability to measure the overall health of each county in all 50 states. They have been used to garner support for local health improvement initiatives among government agencies, healthcare providers, community organizations, business leaders, policy makers, and the public.



## HOW ARE PEOPLE USING THE RANKINGS?

- Ø Highlighting community success
- Ø Identifying root causes of poor health
- Ø Supporting policy change
- Ø Engaging communities in health improvement

For more information, visit [countyhealthrankings.org](http://countyhealthrankings.org)

## WHAT ARE THE ROADMAPS TO HEALTH?

The *Roadmaps to Health* help communities bring people together to look at the many factors that influence health, select strategies that work, and make changes that will have a lasting impact. The *Roadmaps* focus on helping communities determine what they can do and what they can learn from others.

### What You Can Do

The *Roadmaps to Health* Action Center provides step-by-step guides, tools, and webinars to help groups working to improve the health of their communities. Community Coaches also provide customized consultation to local communities that have demonstrated a willingness to address factors that we know influence health, such as education, income, and community safety.

The Action Center also features *What Works for Health* – a searchable database of evidence-informed policies and programs that can improve health.

### Learning From Others

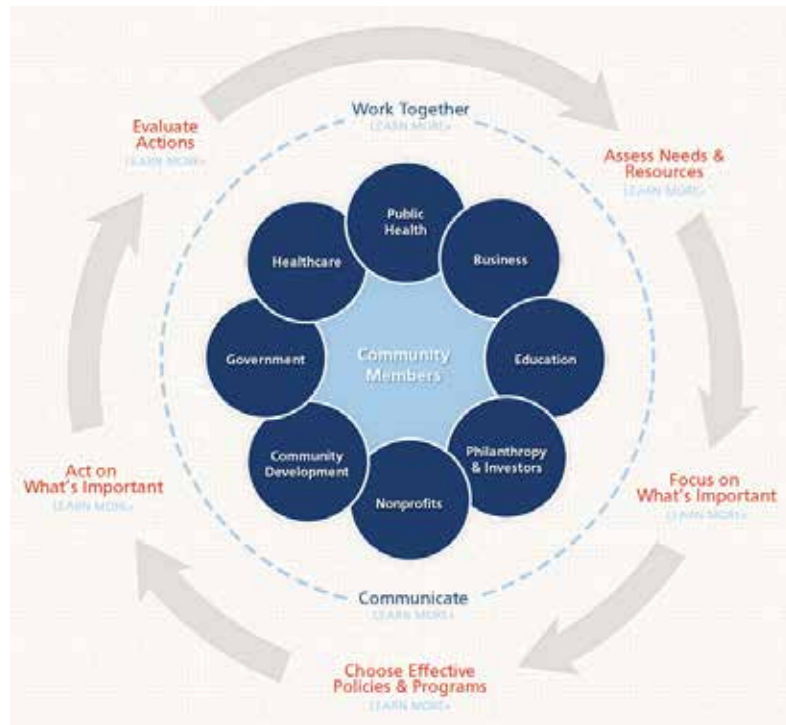
Honoring the efforts of communities working at the forefront of health improvement, the Robert Wood

Johnson Foundation annually awards the *RWJF Culture of Health Prize* to outstanding communities that are working toward better health. The *Prize* recognizes communities with strong and diverse partnerships that are coming together with a shared vision and commitment to address multiple factors that affect health and make lasting changes that create a culture of health for all. Visit [countyhealthrankings.org](http://countyhealthrankings.org) or [rwjf.org/prize](http://rwjf.org/prize) to learn about the work of past prize winners.

At [countyhealthrankings.org](http://countyhealthrankings.org), we also feature stories from communities across the nation who have used data from the *County Health Rankings* or have engaged in strategies to improve health. For example, you can learn from the successes and challenges of the 30 *Roadmaps to Health* Community Grantees. These grantees are working to create positive policy or systems changes that address social and economic factors that influence how healthy people are and how long they live, such as education and community safety. You might also want to contact your local affiliate of United Way Worldwide, the National Business Coalition on Health, or the National Association of Counties - their national parent organizations have partnered with us to raise awareness and stimulate action to improve health in their local members' communities.

## How can you get involved?

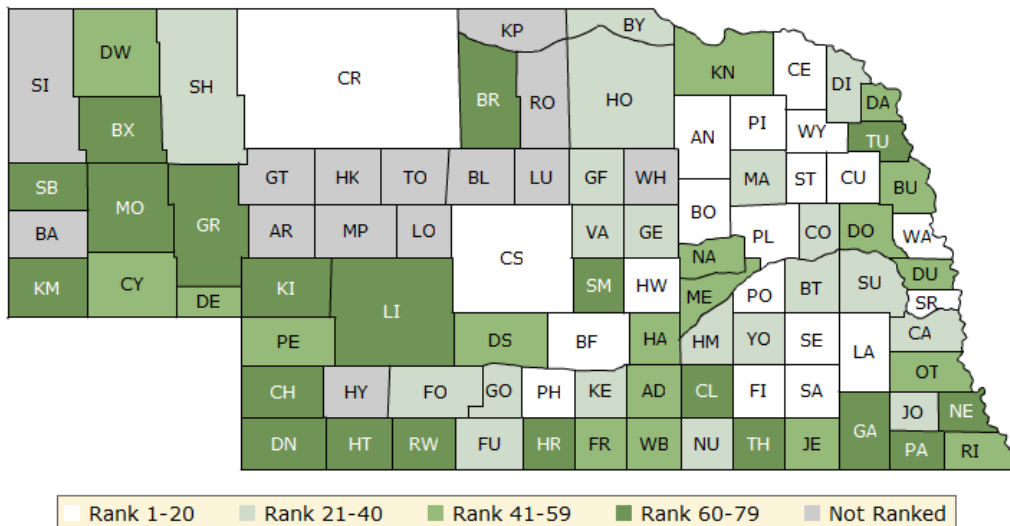
In communities large and small, people from all walks of life are taking ownership and action to improve health. Visit [countyhealthrankings.org](http://countyhealthrankings.org) to get ideas and guidance on how you can take action in your community. Working with others, you can improve the health of your community.



The green map below shows the distribution of Nebraska’s **health outcomes**, based on an equal weighting of length and quality of life.

Lighter colors indicate better performance in the respective summary rankings. Detailed information on the underlying measures is available on our web site.

### HEALTH OUTCOMES RANKS

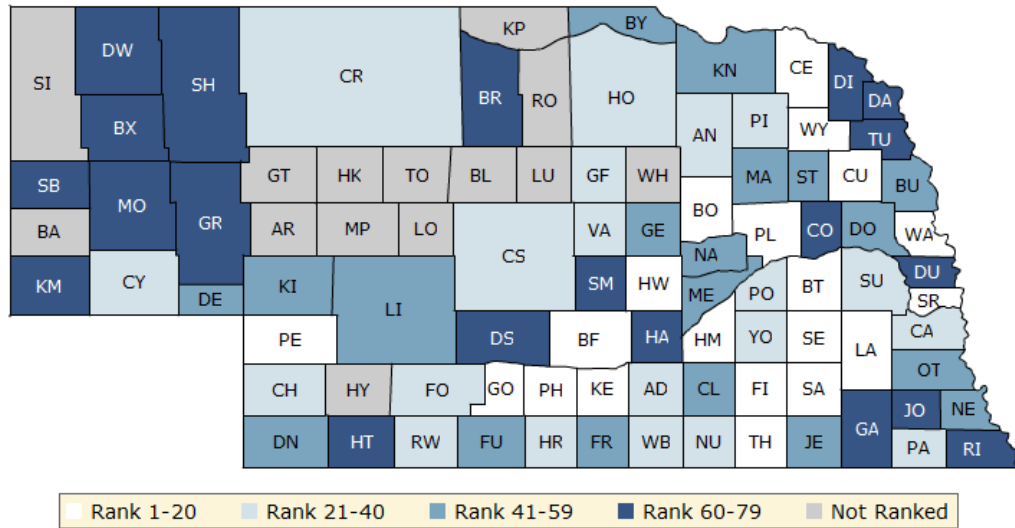


County	Rank	County	Rank	County	Rank	County	Rank
Adams	48	Deuel	46	Johnson	40	Red Willow	61
Antelope	7	Dixon	33	Kearney	21	Richardson	57
Arthur	NR	Dodge	47	Keith	78	Rock	NR
Banner	NR	Douglas	56	Keya Paha	NR	Saline	12
Blaine	NR	Dundy	63	Kimball	79	Sarpy	13
Boone	6	Fillmore	4	Knox	55	Saunders	36
Box Butte	64	Franklin	49	Lancaster	20	Scotts Bluff	70
Boyd	34	Frontier	32	Lincoln	68	Seward	16
Brown	62	Furnas	22	Logan	NR	Sheridan	29
Buffalo	14	Gage	72	Loup	NR	Sherman	73
Burt	41	Garden	76	Madison	31	Sioux	NR
Butler	26	Garfield	35	McPherson	NR	Stanton	17
Cass	38	Gosper	27	Merrick	51	Thayer	74
Cedar	2	Grant	NR	Morrill	69	Thomas	NR
Chase	67	Greeley	28	Nance	58	Thurston	77
Cherry	10	Hall	45	Nemaha	66	Valley	39
Cheyenne	52	Hamilton	30	Nuckolls	25	Washington	8
Clay	60	Harlan	65	Otoe	43	Wayne	3
Colfax	23	Hayes	NR	Pawnee	71	Webster	53
Cuming	9	Hitchcock	75	Perkins	44	Wheeler	NR
Custer	19	Holt	37	Phelps	15	York	24
Dakota	54	Hooker	NR	Pierce	5		
Dawes	42	Howard	18	Platte	11		
Dawson	50	Jefferson	59	Polk	1		

The blue map displays Nebraska's summary ranks for **health factors**, based on weighted scores for health behaviors, clinical care, social and economic factors, and the physical environment.

Lighter colors indicate better performance in the respective summary rankings. Detailed information on the underlying measures is available on our web site.

**HEALTH FACTORS RANKS**



County	Rank	County	Rank	County	Rank	County	Rank
Adams	31	Deuel	49	Johnson	68	Red Willow	35
Antelope	28	Dixon	61	Kearney	8	Richardson	75
Arthur	NR	Dodge	59	Keith	52	Rock	NR
Banner	NR	Douglas	62	Keya Paha	NR	Saline	19
Blaine	NR	Dundy	50	Kimball	74	Sarpy	9
Boone	3	Fillmore	11	Knox	45	Saunders	21
Box Butte	77	Franklin	55	Lancaster	16	Scotts Bluff	73
Boyd	53	Frontier	27	Lincoln	46	Seward	1
Brown	67	Furnas	58	Logan	NR	Sheridan	63
Buffalo	14	Gage	64	Loup	NR	Sherman	60
Burt	56	Garden	66	Madison	41	Sioux	NR
Butler	20	Garfield	22	McPherson	NR	Stanton	54
Cass	24	Gosper	13	Merrick	47	Thayer	10
Cedar	12	Grant	NR	Morrill	70	Thomas	NR
Chase	40	Greeley	51	Nance	48	Thurston	79
Cherry	32	Hall	69	Nemaha	44	Valley	25
Cheyenne	34	Hamilton	2	Nuckolls	39	Washington	5
Clay	42	Harlan	37	Otoe	43	Wayne	6
Colfax	71	Hayes	NR	Pawnee	33	Webster	36
Cuming	15	Hitchcock	72	Perkins	4	Wheeler	NR
Custer	38	Holt	26	Phelps	7	York	23
Dakota	78	Hooker	NR	Pierce	29		
Dawes	65	Howard	18	Platte	17		
Dawson	76	Jefferson	57	Polk	30		

## Summary Health Outcomes & Health Factors Rankings

Counties receive two ranks:

- Health Outcomes
- Health Factors

Each of these ranks represents a weighted summary of a number of measures.

Health outcomes represent how healthy a county is while health factors represent what influences the health of the county.

Rank	Health Outcomes	Rank	Health Factors
1	Polk	1	Seward
2	Cedar	2	Hamilton
3	Wayne	3	Boone
4	Fillmore	4	Perkins
5	Pierce	5	Washington
6	Boone	6	Wayne
7	Antelope	7	Phelps
8	Washington	8	Kearney
9	Cuming	9	Sarpy
10	Cherry	10	Thayer
11	Platte	11	Fillmore
12	Saline	12	Cedar
13	Sarpy	13	Gosper
14	Buffalo	14	Buffalo
15	Phelps	15	Cuming
16	Seward	16	Lancaster
17	Stanton	17	Platte
18	Howard	18	Howard
19	Custer	19	Saline
20	Lancaster	20	Butler
21	Kearney	21	Saunders
22	Furnas	22	Garfield
23	Colfax	23	York
24	York	24	Cass
25	Nuckolls	25	Valley
26	Butler	26	Holt
27	Gosper	27	Frontier
28	Greeley	28	Antelope
29	Sheridan	29	Pierce
30	Hamilton	30	Polk
31	Madison	31	Adams
32	Frontier	32	Cherry
33	Dixon	33	Pawnee
34	Boyd	34	Cheyenne
35	Garfield	35	Red Willow
36	Saunders	36	Webster
37	Holt	37	Harlan
38	Cass	38	Custer
39	Valley	39	Nuckolls
40	Johnson	40	Chase

Rank	Health Outcomes	Rank	Health Factors
41	Burt	41	Madison
42	Dawes	42	Clay
43	Otoe	43	Otoe
44	Perkins	44	Nemaha
45	Hall	45	Knox
46	Deuel	46	Lincoln
47	Dodge	47	Merrick
48	Adams	48	Nance
49	Franklin	49	Deuel
50	Dawson	50	Dundy
51	Merrick	51	Greeley
52	Cheyenne	52	Keith
53	Webster	53	Boyd
54	Dakota	54	Stanton
55	Knox	55	Franklin
56	Douglas	56	Burt
57	Richardson	57	Jefferson
58	Nance	58	Furnas
59	Jefferson	59	Dodge
60	Clay	60	Sherman
61	Red Willow	61	Dixon
62	Brown	62	Douglas
63	Dundy	63	Sheridan
64	Box Butte	64	Gage
65	Harlan	65	Dawes
66	Nemaha	66	Garden
67	Chase	67	Brown
68	Lincoln	68	Johnson
69	Morrill	69	Hall
70	Scotts Bluff	70	Morrill
71	Pawnee	71	Colfax
72	Gage	72	Hitchcock
73	Sherman	73	Scotts Bluff
74	Thayer	74	Kimball
75	Hitchcock	75	Richardson
76	Garden	76	Dawson
77	Thurston	77	Box Butte
78	Keith	78	Dakota
79	Kimball	79	Thurston

**Not Ranked:** Arthur, Banner, Blaine, Grant, Hayes, Hooker, Keya Paha, Logan, Loup, McPherson, Rock, Sioux, Thomas, Wheeler



## 2014 County Health Rankings: Measures, Data Sources, and Years of Data

	Measure	Data Source	Years of Data
<b>HEALTH OUTCOMES</b>			
<b>Length of Life</b>	Premature death	National Center for Health Statistics	2008-2010
<b>Quality of Life</b>	Poor or fair health	Behavioral Risk Factor Surveillance System	2006-2012
	Poor physical health days	Behavioral Risk Factor Surveillance System	2006-2012
	Poor mental health days	Behavioral Risk Factor Surveillance System	2006-2012
	Low birthweight	National Center for Health Statistics	2005-2011
<b>HEALTH FACTORS</b>			
<b>HEALTH BEHAVIORS</b>			
<b>Tobacco Use</b>	Adult smoking	Behavioral Risk Factor Surveillance System	2006-2012
<b>Diet and Exercise</b>	Adult obesity	National Center for Chronic Disease Prevention and Health Promotion	2010
	Food environment index	USDA Food Environment Atlas, Map the Meal Gap	2010-2011
	Physical inactivity	National Center for Chronic Disease Prevention and Health Promotion	2010
	Access to exercise opportunities	OneSource Global Business Browser, Delorme map data, ESRI, & US Census Tigerline Files	2010 & 2012
<b>Alcohol and Drug Use</b>	Excessive drinking	Behavioral Risk Factor Surveillance System	2006-2012
	Alcohol-impaired driving deaths	Fatality Analysis Reporting System	2008-2012
<b>Sexual Activity</b>	Sexually transmitted infections	National Center for HIV/AIDS, Viral Hepatitis, STD, and TB prevention	2011
	Teen births	National Center for Health Statistics	2005-2011
<b>CLINICAL CARE</b>			
<b>Access to Care</b>	Uninsured	Small Area Health Insurance Estimates	2011
	Primary care physicians	HRSA Area Resource File	2011
	Dentists	HRSA Area Resource File	2012
	Mental health providers	CMS, National Provider Identification	2013
<b>Quality of Care</b>	Preventable hospital stays	Medicare/Dartmouth Institute	2011
	Diabetic screening	Medicare/Dartmouth Institute	2011
	Mammography screening	Medicare/Dartmouth Institute	2011
<b>SOCIAL AND ECONOMIC FACTORS</b>			
<b>Education</b>	High school graduation	data.gov, supplemented with National Center for Education Statistics	2010-2011
	Some college	American Community Survey	2008-2012
<b>Employment</b>	Unemployment	Bureau of Labor Statistics	2012
<b>Income</b>	Children in poverty	Small Area Income and Poverty Estimates	2012
<b>Family and Social Support</b>	Inadequate social support	Behavioral Risk Factor Surveillance System	2005-2010
	Children in single-parent households	American Community Survey	2008-2012
<b>Community Safety</b>	Violent crime	Uniform Crime Reporting - FBI	2009-2011
	Injury deaths	CDC WONDER	2006-2010
<b>PHYSICAL ENVIRONMENT</b>			
<b>Air and Water Quality</b>	Air pollution - particulate matter <sup>1</sup>	CDC WONDER	2011
	Drinking water violations	Safe Drinking Water Information System	FY 2012-2013
<b>Housing and Transit</b>	Severe housing problems	HUD, Comprehensive Housing Affordability Strategy	2006-2010
	Driving alone to work	American Community Survey	2008-2012
	Long commute – driving alone	American Community Survey	2008-2012

<sup>1</sup> Not available for AK and HI.

CREDITS

**Report Authors**

University of Wisconsin-Madison  
School of Medicine and Public Health  
Department of Population Health Sciences  
Population Health Institute

Bridget Catlin, PhD, MHSA  
Amanda Jovaag, MS  
Julie Willems Van Dijk, PhD, RN  
Patrick Remington, MD, MPH

This publication would not have been possible without the following contributions:

***Data***

Centers for Disease Control and Prevention: National Center for Health Statistics and Division of Behavioral Surveillance  
Dartmouth Institute for Health Policy & Clinical Practice

***Research Assistance***

Jennifer Buechner  
Hyojun Park, MA  
Elizabeth Pollock  
Jennifer Robinson  
Matthew Rodock, MPH  
Anne Roubal, MS

***Communications and Outreach***

Burness Communications  
Alison Bergum, MPA  
Matthew Call  
Kate Konkle, MPH  
Kitty Jerome, MA  
Karen Odegaard, MPH  
Jan O'Neill, MPA

***Design***

Forum One, Alexandria, VA

***Robert Wood Johnson Foundation***

Abbey Cofsky, MPH – Senior Program Officer  
Michelle Larkin, JD, MS, RN – Assistant Vice-President, Program Portfolios  
Marjorie Paloma, MPH – Senior Policy Advisor  
James S. Marks, MD, MPH – Senior Vice-President and Director, Program Portfolios  
Joe Marx – Senior Communications Officer

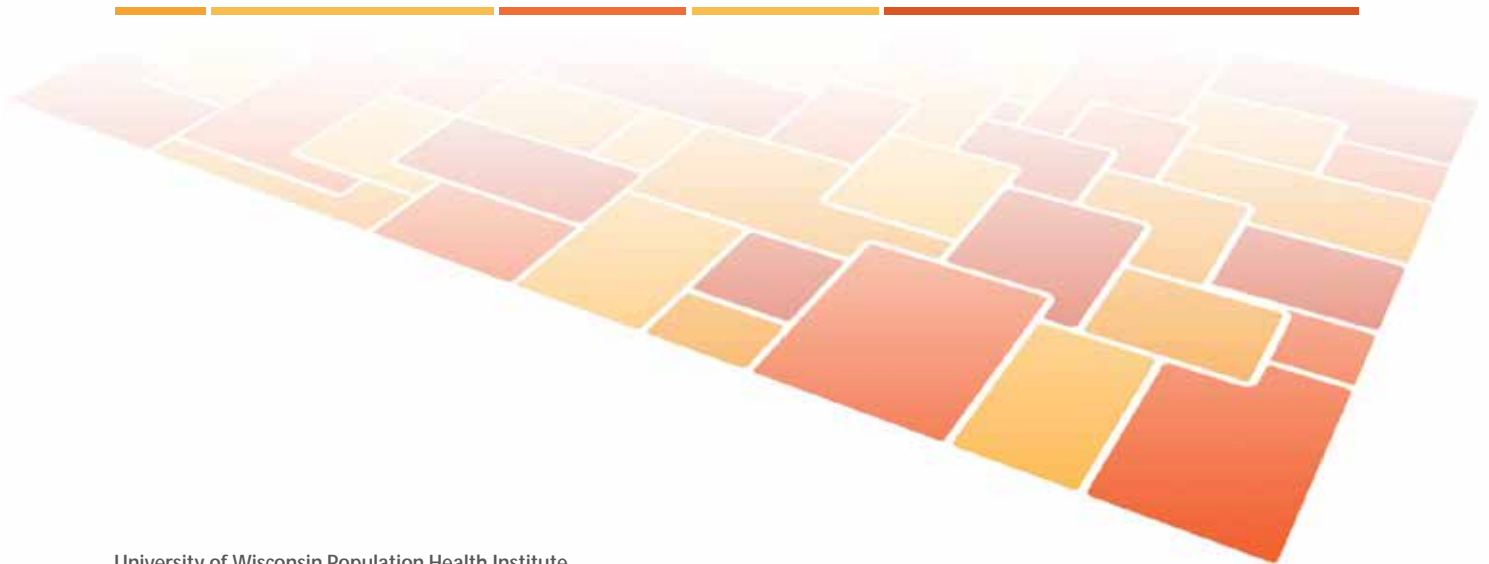
Suggested citation: University of Wisconsin Population Health Institute. *County Health Rankings 2014*.

INSIDE BACK COVER – INTENTIONALLY BLANK

# County Health Rankings & Roadmaps

Building a Culture of Health, County by County

[countyhealthrankings.org](http://countyhealthrankings.org)



University of Wisconsin Population Health Institute  
610 Walnut St, #524, Madison, WI 53726  
(608) 265-8240 / [info@countyhealthrankings.org](mailto:info@countyhealthrankings.org)

