



# County Health Rankings & Roadmaps

A Healthier Nation, County by County

## 2013 *Rankings* **Illinois**



Robert Wood Johnson Foundation



UNIVERSITY OF WISCONSIN

**Population Health Institute**

*Translating Research for Policy and Practice*

## Introduction

Where we live matters to our health. The health of a community depends on many different factors, including the environment, education and jobs, access to and quality of healthcare, and individual behaviors. We can improve a community's health by implementing effective policies and programs. For example, people who live in communities with smoke-free laws are less likely to smoke or to be exposed to second-hand smoke, which reduces lung cancer risk. In addition, people who live in communities with safe and accessible park and recreation space are more likely to exercise, which reduces heart disease risk.

However, health varies greatly across communities, with some places being much healthier than others. And, until now, there has been no standard method to illustrate what we know about what makes people sick or healthy or a central resource to identify what we can do to create healthier places to live, learn, work and play.

We know that much of what influences our health happens outside of the doctor's office – in our schools, workplaces and neighborhoods. The *County Health Rankings & Roadmaps* program provides information on the overall health of your community and provides the tools necessary to create community-based, evidence-informed solutions. Ranking the health of nearly every county across the nation, the *County Health Rankings* illustrate **what we know** when it comes to what is making communities sick or healthy. The *County Health Roadmaps* show **what we can do** to create healthier places to live, learn, work and play. The Robert Wood Johnson Foundation collaborates with the University of Wisconsin

Population Health Institute to bring this groundbreaking program to counties and states across the nation.

The *County Health Rankings & Roadmaps* program includes the *County Health Rankings* project, launched in 2010, and the newer *Roadmaps* project that mobilizes local communities, national partners and leaders across all sectors to improve health. The program is based on this model of population health improvement:



In this model, health outcomes are measures that describe the current health status of a county. These health outcomes are influenced by a set of health factors. Counties can improve health outcomes by addressing all health factors with effective, evidence-informed policies and programs.

Everyone has a stake in community health. We all need to work together to find solutions. The *County Health Rankings & Roadmaps* serve as both a call to action and a needed tool in this effort.

## Guide to Our Web Site

To compile the *Rankings*, we selected measures that reflect important aspects of population health that can be improved and are available at the county level across the nation. Visit [www.countyhealthrankings.org](http://www.countyhealthrankings.org) to learn more.

To get started and see data, enter your county or state name in the search box. Click on the name of a county or measure to see more details. You can: Compare Counties; Download data for your state; Print one or more county

snapshots; or Share information with others via Facebook, Twitter, or Google+. To understand our methods, click on Learn about the Data and Methods. You can also take advantage of the Using the *Rankings* Data guide to help you explore the data and figure out more about what is driving your community's health. To learn about what you can do to improve health in your community, visit the *Roadmaps to Health* Action Center. Finally, you can learn what others are doing by reading Communities Stories and visiting the Project Showcase.

## County Health Roadmaps

The *Rankings* illustrate **what we know** when it comes to making people sick or healthy. The *County Health Rankings* confirm the critical role that factors such as education, jobs, income and the environment play in how healthy people are and how long we live.

The *County Health Roadmaps* mobilizes local communities, national partners and leaders across all sectors to improve health. The *County Health Roadmaps* show **what we can do** to create healthier places to live, learn, work and play. The Robert Wood Johnson Foundation (RWJF) collaborates with the University of Wisconsin Population Health Institute (UWPHI) to bring this groundbreaking project to cities, counties and states across the nation.

The *Roadmaps* project includes grants to local coalitions and partnerships among policymakers, business, education, public health, health care, and community organizations; grants to national organizations working to improve health; recognition of communities whose promising efforts have led to better health; and customized guidance on strategies to improve health.

### Roadmaps to Health Community Grants

The *Roadmaps to Health* Community Grants provide funding for 2 years to thirty state and local efforts among policymakers, business, education, healthcare, public health and community organizations working to create positive policy or systems changes that address the social and economic factors that influence the health of people in their community.

### Roadmaps to Health Partner Grants

RWJF is awarding *Roadmaps to Health* Partner Grants to national organizations that are experienced at engaging local partners and leaders and are able to deliver high-quality training and technical assistance, and committed to making communities healthier places to live, learn, work and play. Partner grantees increase awareness about the *County Health Rankings & Roadmaps* to their members, affiliates and allies. As of February 2013, RWJF has awarded partner grants to United Way Worldwide, National Business Coalition on Health, and National Association of Counties.

### RWJF Roadmaps to Health Prize

In February 2013, RWJF awarded the first *RWJF Roadmaps to Health* Prizes of \$25,000 to six communities that are working to become healthier places to live, learn, work and play. The *RWJF Roadmaps to Health* Prize is intended not only to honor successful efforts, but also to inspire and stimulate similar activities in other U.S. communities.



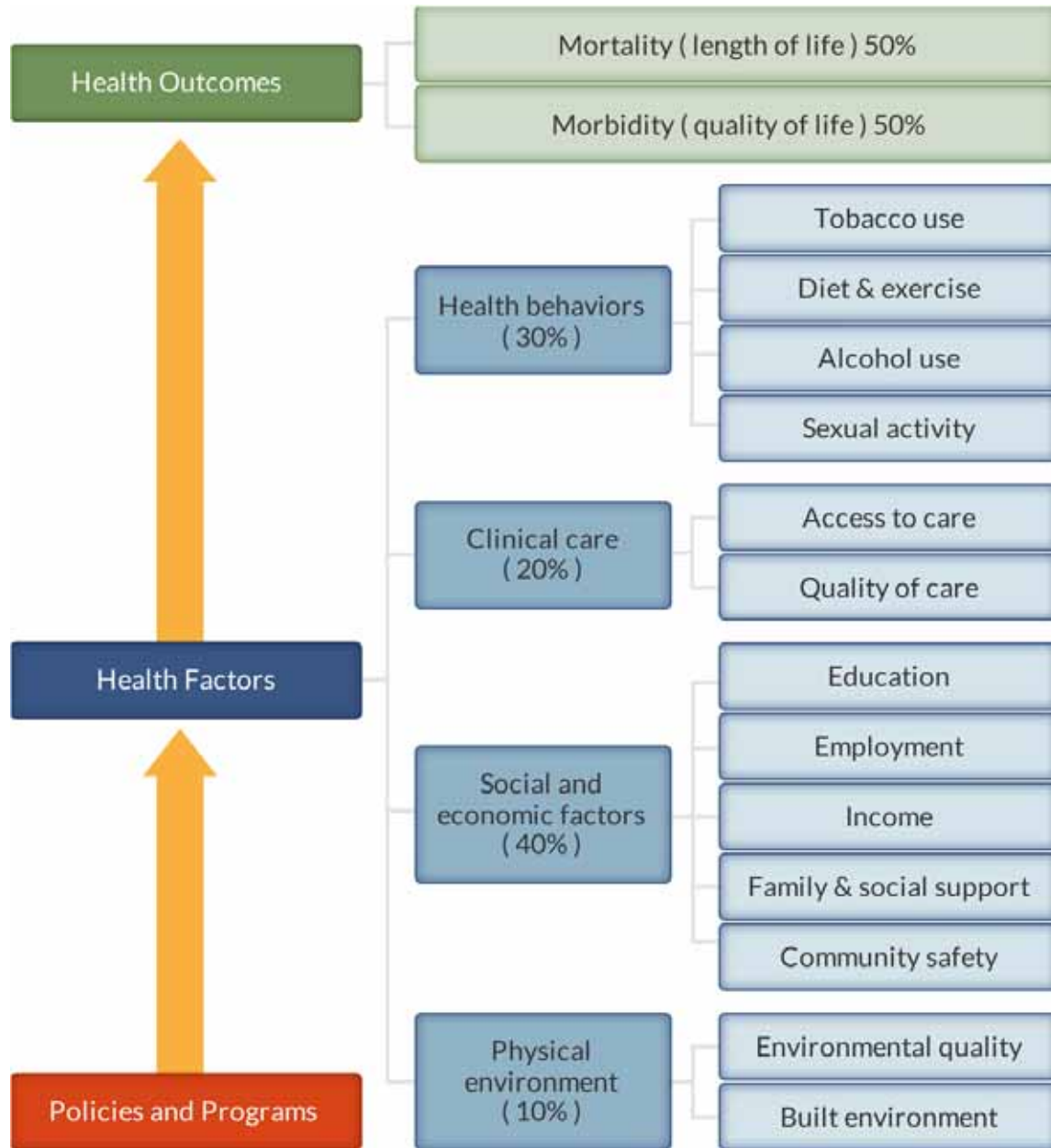
### Roadmaps to Health Action Center

The *Roadmaps to Health* Action Center, based at UWPHI, provides tools and guidance to help groups working to make their communities healthier places. The Action Center website provides guidance on developing strategies and advocacy efforts to advance pro-health policies, opportunities for ongoing learning, and a searchable database of evidence-informed policies and programs focused on health improvement: *What Works for Health*. Action Center staff provide customized consultation via email and telephone to those seeking more information about how to improve health. Coaching, including possible on-site visits, is also available for communities who have demonstrated the willingness and capacity to address factors that we know influence how healthy a person is, such as education, income and family connectedness.

## County Health Rankings

The 2013 *County Health Rankings* report ranks Illinois counties according to their summary measures of **health outcomes** and **health factors**. Counties also receive a rank for mortality, morbidity, health behaviors, clinical care, social and economic factors, and the physical environment. The figure below depicts the structure of the *Rankings* model; those having high ranks (e.g., 1 or 2) are estimated to be the “healthiest.”

Our summary **health outcomes** rankings are based on an equal weighting of mortality and morbidity measures. The summary **health factors** rankings are based on weighted scores of four types of factors: behavioral, clinical, social and economic, and environmental. The weights for the factors (shown in parentheses in the figure) are based upon a review of the literature and expert input, but represent just one way of combining these factors.

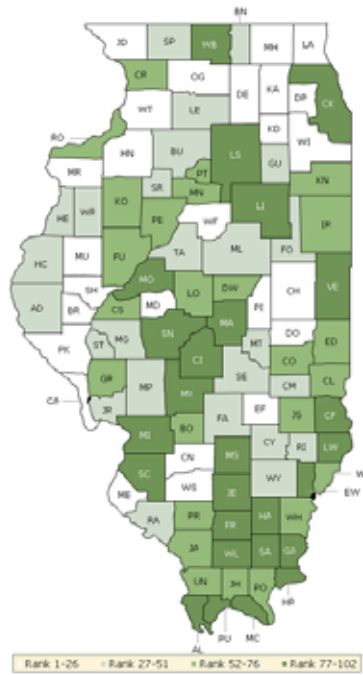


County Health Rankings model ©2012 UWPHI

The maps on this page and the next display Illinois's counties divided into groups by health rank. Maps help locate the healthiest and least healthy counties in the state. The lighter colors indicate better

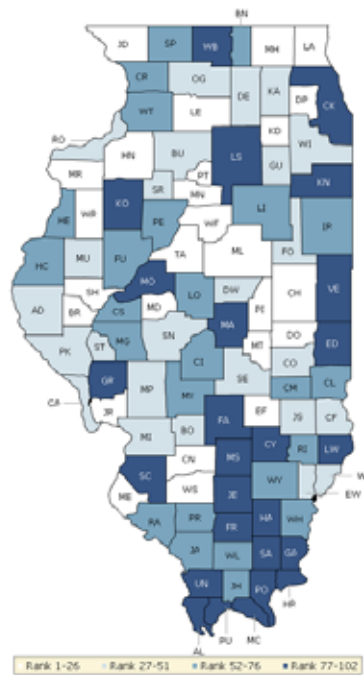
performance in the respective summary rankings. The green map shows the distribution of summary health outcomes. The blue displays the distribution of the summary rank for health factors.

### HEALTH OUTCOMES



County	Rank	County	Rank	County	Rank	County	Rank
Adams	44	Ford	34	Livingston	84	Randolph	43
Alexander	102	Franklin	99	Logan	75	Richland	51
Bond	62	Fulton	69	Macon	86	Rock Island	54
Boone	28	Gallatin	101	Macoupin	45	Saline	97
Brown	9	Greene	61	Madison	83	Sangamon	80
Bureau	35	Grundy	41	Marion	91	Schuyler	8
Calhoun	13	Hamilton	93	Marshall	64	Scott	47
Carroll	53	Hancock	27	Mason	92	Shelby	30
Cass	57	Hardin	94	Massac	95	St. Clair	88
Champaign	23	Henderson	38	McDonough	10	Stark	48
Christian	81	Henry	5	McHenry	17	Stephenson	50
Clark	71	Iroquois	68	McLean	33	Tazewell	29
Clay	49	Jackson	73	Menard	26	Union	67
Clinton	15	Jasper	63	Mercer	4	Vermilion	96
Coles	55	Jefferson	90	Monroe	21	Wabash	56
Cook	78	Jersey	37	Montgomery	79	Warren	32
Crawford	85	Jo Daviess	2	Morgan	39	Washington	19
Cumberland	36	Johnson	65	Moultrie	31	Wayne	46
De Witt	59	Kane	12	Ogle	22	White	70
DeKalb	14	Kankakee	72	Peoria	66	Whiteside	18
Douglas	1	Kendall	7	Perry	52	Will	25
DuPage	6	Knox	74	Piatt	20	Williamson	87
Edgar	76	Lake	16	Pike	11	Winnebago	82
Edwards	100	LaSalle	77	Pope	60	Woodford	3
Effingham	24	Lawrence	89	Pulaski	98		
Fayette	42	Lee	40	Putnam	58		

### HEALTH FACTORS



County	Rank	County	Rank	County	Rank	County	Rank
Adams	39	Ford	49	Livingston	58	Randolph	55
Alexander	102	Franklin	93	Logan	69	Richland	60
Bond	31	Fulton	66	Macon	92	Rock Island	41
Boone	70	Gallatin	91	Macoupin	43	Saline	88
Brown	9	Greene	79	Madison	47	Sangamon	42
Bureau	48	Grundy	46	Marion	98	Schuyler	20
Calhoun	27	Hamilton	85	Marshall	17	Scott	45
Carroll	59	Hancock	57	Mason	78	Shelby	33
Cass	75	Hardin	96	Massac	90	St. Clair	95
Champaign	15	Henderson	53	McDonough	28	Stark	32
Christian	63	Henry	16	McHenry	6	Stephenson	61
Clark	71	Iroquois	68	McLean	7	Tazewell	13
Clay	77	Jackson	64	Menard	14	Union	86
Clinton	11	Jasper	44	Mercer	24	Vermilion	99
Coles	34	Jefferson	83	Monroe	2	Wabash	50
Cook	84	Jersey	19	Montgomery	62	Warren	26
Crawford	51	Jo Daviess	10	Morgan	52	Washington	23
Cumberland	54	Johnson	72	Moultrie	21	Wayne	56
De Witt	40	Kane	38	Ogle	30	White	65
DeKalb	36	Kankakee	97	Peoria	73	Whiteside	67
Douglas	22	Kendall	4	Perry	74	Will	29
DuPage	1	Knox	80	Piatt	8	Williamson	76
Edgar	82	Lake	5	Pike	37	Winnebago	101
Edwards	35	LaSalle	81	Pope	89	Woodford	3
Effingham	12	Lawrence	87	Pulaski	100		
Fayette	94	Lee	25	Putnam	18		

## Summary Health Outcomes & Health Factors Rankings

Counties receive two summary ranks:

- Health Outcomes
- Health Factors

Each of these ranks represents a weighted summary of a number of measures.

Health outcomes represent how healthy a county is while health factors represent what influences the health of the county.

Rank	Health Outcomes	Rank	Health Factors
1	Douglas	1	DuPage
2	Jo Daviess	2	Monroe
3	Woodford	3	Woodford
4	Mercer	4	Kendall
5	Henry	5	Lake
6	DuPage	6	McHenry
7	Kendall	7	McLean
8	Schuyler	8	Piatt
9	Brown	9	Brown
10	McDonough	10	Jo Daviess
11	Pike	11	Clinton
12	Kane	12	Effingham
13	Calhoun	13	Tazewell
14	DeKalb	14	Menard
15	Clinton	15	Champaign
16	Lake	16	Henry
17	McHenry	17	Marshall
18	Whiteside	18	Putnam
19	Washington	19	Jersey
20	Piatt	20	Schuyler
21	Monroe	21	Moultrie
22	Ogle	22	Douglas
23	Champaign	23	Washington
24	Effingham	24	Mercer
25	Will	25	Lee
26	Menard	26	Warren
27	Hancock	27	Calhoun
28	Boone	28	McDonough
29	Tazewell	29	Will
30	Shelby	30	Ogle
31	Moultrie	31	Bond
32	Warren	32	Stark
33	McLean	33	Shelby
34	Ford	34	Coles
35	Bureau	35	Edwards
36	Cumberland	36	DeKalb
37	Jersey	37	Pike
38	Henderson	38	Kane
39	Morgan	39	Adams
40	Lee	40	De Witt
41	Grundy	41	Rock Island
42	Fayette	42	Sangamon

Rank	Health Outcomes	Rank	Health Factors
43	Randolph	43	Macoupin
44	Adams	44	Jasper
45	Macoupin	45	Scott
46	Wayne	46	Grundy
47	Scott	47	Madison
48	Stark	48	Bureau
49	Clay	49	Ford
50	Stephenson	50	Wabash
51	Richland	51	Crawford
52	Perry	52	Morgan
53	Carroll	53	Henderson
54	Rock Island	54	Cumberland
55	Coles	55	Randolph
56	Wabash	56	Wayne
57	Cass	57	Hancock
58	Putnam	58	Livingston
59	De Witt	59	Carroll
60	Pope	60	Richland
61	Greene	61	Stephenson
62	Bond	62	Montgomery
63	Jasper	63	Christian
64	Marshall	64	Jackson
65	Johnson	65	White
66	Peoria	66	Fulton
67	Union	67	Whiteside
68	Iroquois	68	Iroquois
69	Fulton	69	Logan
70	White	70	Boone
71	Clark	71	Clark
72	Kankakee	72	Johnson
73	Jackson	73	Peoria
74	Knox	74	Perry
75	Logan	75	Cass
76	Edgar	76	Williamson
77	LaSalle	77	Clay
78	Cook	78	Mason
79	Montgomery	79	Greene
80	Sangamon	80	Knox
81	Christian	81	LaSalle
82	Winnebago	82	Edgar
83	Madison	83	Jefferson
84	Livingston	84	Cook
85	Crawford	85	Hamilton
86	Macon	86	Union
87	Williamson	87	Lawrence
88	St. Clair	88	Saline
89	Lawrence	89	Pope
90	Jefferson	90	Massac



Rank	Health Outcomes	Rank	Health Factors
91	Marion	91	Gallatin
92	Mason	92	Macon
93	Hamilton	93	Franklin
94	Hardin	94	Fayette
95	Massac	95	St. Clair
96	Vermilion	96	Hardin
97	Saline	97	Kankakee
98	Pulaski	98	Marion
99	Franklin	99	Vermilion
100	Edwards	100	Pulaski
101	Gallatin	101	Winnebago
102	Alexander	102	Alexander

## 2013 County Health Rankings: Measures, Data Sources, and Years of Data

	Measure	Data Source	Years of Data
<b>HEALTH OUTCOMES</b>			
<b>Mortality</b>	Premature death	National Center for Health Statistics	2008-2010
<b>Morbidity</b>	Poor or fair health	Behavioral Risk Factor Surveillance System	2005-2011
	Poor physical health days	Behavioral Risk Factor Surveillance System	2005-2011
	Poor mental health days	Behavioral Risk Factor Surveillance System	2005-2011
	Low birthweight	National Center for Health Statistics	2004-2010
<b>HEALTH FACTORS</b>			
<b>HEALTH BEHAVIORS</b>			
<b>Tobacco Use</b>	Adult smoking	Behavioral Risk Factor Surveillance System	2005-2011
<b>Diet and Exercise</b>	Adult obesity	National Center for Chronic Disease Prevention and Health Promotion	2009
	Physical inactivity	National Center for Chronic Disease Prevention and Health Promotion	2009
<b>Alcohol Use</b>	Excessive drinking	Behavioral Risk Factor Surveillance System	2005-2011
	Motor vehicle crash death rate	National Center for Health Statistics	2004-2010
<b>Sexual Activity</b>	Sexually transmitted infections	National Center for HIV/AIDS, Viral Hepatitis, STD, and TB prevention	2010
	Teen birth rate	National Center for Health Statistics	2004-2010
<b>CLINICAL CARE</b>			
<b>Access to Care</b>	Uninsured	Small Area Health Insurance Estimates	2010
	Primary care physicians	HRSA Area Resource File	2011-2012
	Dentists	HRSA Area Resource File	2011-2012
<b>Quality of Care</b>	Preventable hospital stays	Medicare/Dartmouth Institute	2010
	Diabetic screening	Medicare/Dartmouth Institute	2010
	Mammography screening	Medicare/Dartmouth Institute	2010
<b>SOCIAL AND ECONOMIC FACTORS</b>			
<b>Education</b>	High school graduation	Primarily state-specific sources, supplemented with National Center for Education Statistics	State-specific
	Some college	American Community Survey	2007-2011
<b>Employment</b>	Unemployment	Bureau of Labor Statistics	2011
<b>Income</b>	Children in poverty	Small Area Income and Poverty Estimates	2011
<b>Family and Social Support</b>	Inadequate social support	Behavioral Risk Factor Surveillance System	2005-2010
	Children in single-parent households	American Community Survey	2007-2011
<b>Community Safety</b>	Violent crime rate	Federal Bureau of Investigation	2008-2010
<b>PHYSICAL ENVIRONMENT</b>			
<b>Environmental Quality</b>	Daily fine particulate matter <sup>1</sup>	CDC WONDER Environmental data	2008
	Drinking water safety	Safe Drinking Water Information System	FY 2012
<b>Built Environment</b>	Access to recreational facilities	Census County Business Patterns	2010
	Limited access to healthy foods	USDA Food Environment Atlas	2012
	Fast food restaurants	Census County Business Patterns	2010

<sup>1</sup> Not available for AK and HI.

CREDITS

**Report Authors**

University of Wisconsin-Madison  
School of Medicine and Public Health  
Department of Population Health Sciences  
Population Health Institute

Bridget Booske Catlin, PhD, MHSA  
Amanda Jovaag, MS  
Patrick Remington, MD, MPH

This publication would not have been possible without the following contributions:

**Data**

Centers for Disease Control and Prevention: National Center for Health Statistics and Division of Behavioral Surveillance  
Dartmouth Institute for Health Policy & Clinical Practice

**Research Assistance**

Jennifer Buechner  
Hyojun Park, MA  
Elizabeth Pollock  
Jennifer Robinson  
Matthew Rodock, MPH  
Anne Roubal, MS

**Communications and Outreach**

Burness Communications  
Anna Graupner, MPH  
Kate Konkle, MPH  
Karen Odegaard, MPH  
Jan O'Neill, MPA  
Angela Russell, MS  
Julie Willems Van Dijk, PhD, RN

**Design**

Forum One, Alexandria, VA

**Robert Wood Johnson Foundation**

Abbey Cofsky, MPH –Senior Program Officer  
Michelle Larkin, JD, MS, RN – Assistant Vice-President and Deputy Director, Health Group  
James S. Marks, MD, MPH – Senior Vice-President and Group Director, Health Group  
Joe Marx – Senior Communications Officer

Suggested citation: University of Wisconsin Population Health Institute. *County Health Rankings 2013*.



[countyhealthrankings.org](http://countyhealthrankings.org)



University of Wisconsin Population Health Institute  
610 Walnut St, #524, Madison, WI 53726  
(608) 265-6370 / [info@countyhealthrankings.org](mailto:info@countyhealthrankings.org)

